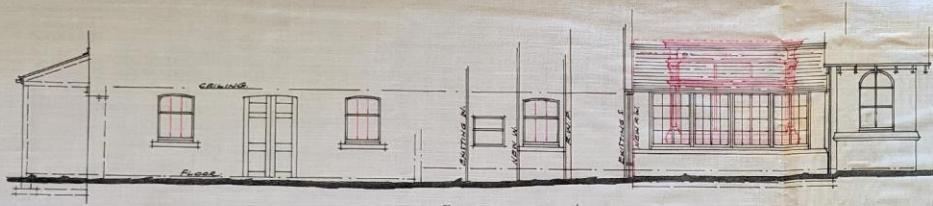
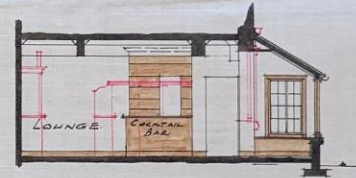


LUNDIN LINKS HOTEL. FIFE.
 PROPOSED LOUNGE - 3RD CLASS BAR AND
 LAVATORY ACCOMMODATION FOR
 A. H. MURISSET ESQ.

NOTE: RED LINES INDICATE
 EXISTING WORK REMOVED.



ELEVATION.



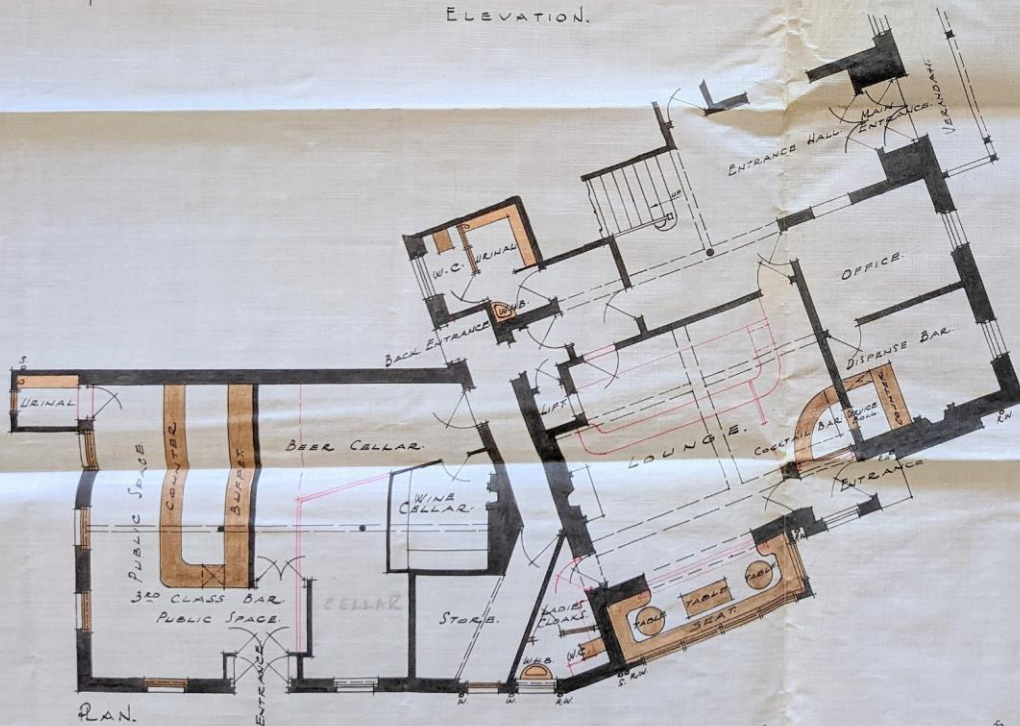
SECTION THRO' LOUNGE.

Approved of at a Meeting of the Licensing
 for St Andrews District held on 30th October

C. Space
 Clerk



SECTION THRO' BARS



P.L.N.

BLOCK PLAN.



Scale in Feet.

Scale of Feet.



L. A. ROLLAND L.R.I.B.A.
 CHARTERED & REGISTERED
 ARCHITECT & SURVEYOR
 27 HIGH STREET, LEVEN
 17 OCT 1934.