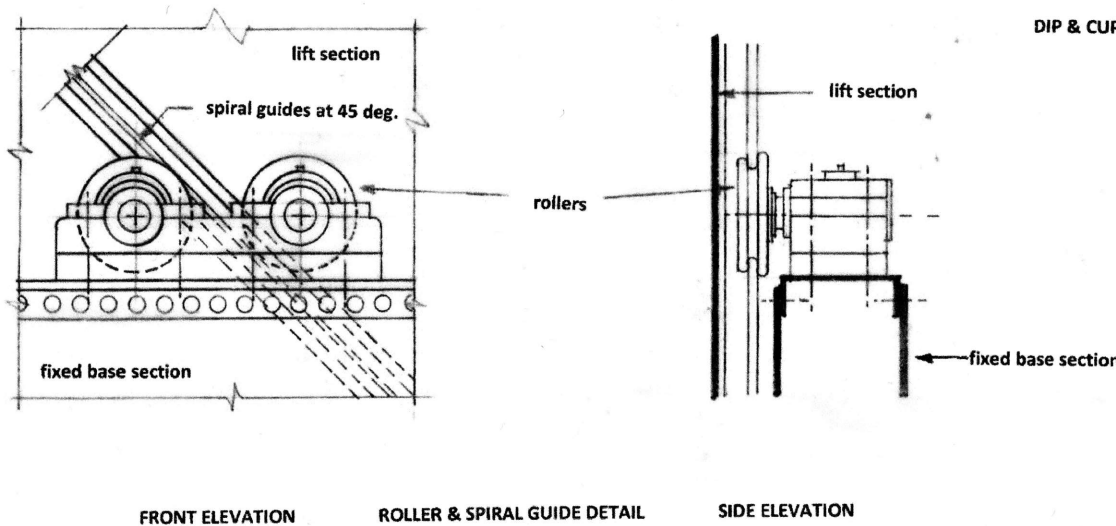


GAS HOLDER

The Largo gas holder was of the water sealed single lift spiral guided type, invented by William Gadd of Manchester in 1890 (the first example being constructed at Northwich, Cheshire in 1890). This type of holder remained in use in Britain until 1983. These gas holders have no external steel guide frames, and each lift is guided by the one below or in the case at Largo the fixed base section. The holder rotates as it lifts as dictated by the steel runners, set at 45 degrees around the perimeter of the lift section and rollers fixed to the base section. The sealing of the joint between the base and lift sections is provided by a water seal "dip" & "cup" system fitted around the perimeter of the lift & base sections. The whole lift section floats on a circular water reservoir, held up by the roughly constant pressure of a varying volume of gas, the pressure being determined by the weight of the lift section and the water providing the seal for the gas within the moving wall.

Gas holders now tend to be used for balancing purposes, to ensure gas pipes can be operated within a safe range of pressures rather than actually storing gas for later use. This was the case at Largo in the period between the works closing. The Largo & Lundin Links Gas Co. Ltd merged with the Kennoway & Windygates Gas Co. Ltd to form the Kennoway & Largo Gas Co. Ltd. in 1925 and the new gas main from Kennoway to Largo was installed in 1926 to fill the holder. Later in the early 1960's a new gas main for natural gas was constructed around the coast of Fife, this made the Largo gas holder redundant and it was demolished prior to the 1964 edition Ordnance Survey map (see Drg. no. 1, site plan). The circular concrete base for the holder remaining on site and partially exposed in 2018.

DIP & CUP WATER SEAL DETAIL



The gas holder was probably manufactured by or for Messrs Gadd & Mason of Manchester under their patent with Messrs J & H Dempster also of Manchester patent "Bearscoot" type spiral guides & rollers.